



Letter of Intent

Howard Hanna is a large, 400+ office residential real estate brokerage. Our brand is created through our yard signs and building signs. This location on Empire Boulevard was chosen based on the potential visibility of the signs. We are prepared to enter into a long-term lease and invest hundreds of thousands of dollars on the interior – a real investment to the community. We currently have an office in Webster that is being relocated to Pennfield. It is critical that the consumer knows we are there. To reach the consumer, we feel it is necessary to maximize the signage on the building, and thus are requesting a sign on each of the 3 sides. There is no “frontage” to this building (Verizon has it) therefore it is necessary to use the remaining sides to catch the consumer’s eye.

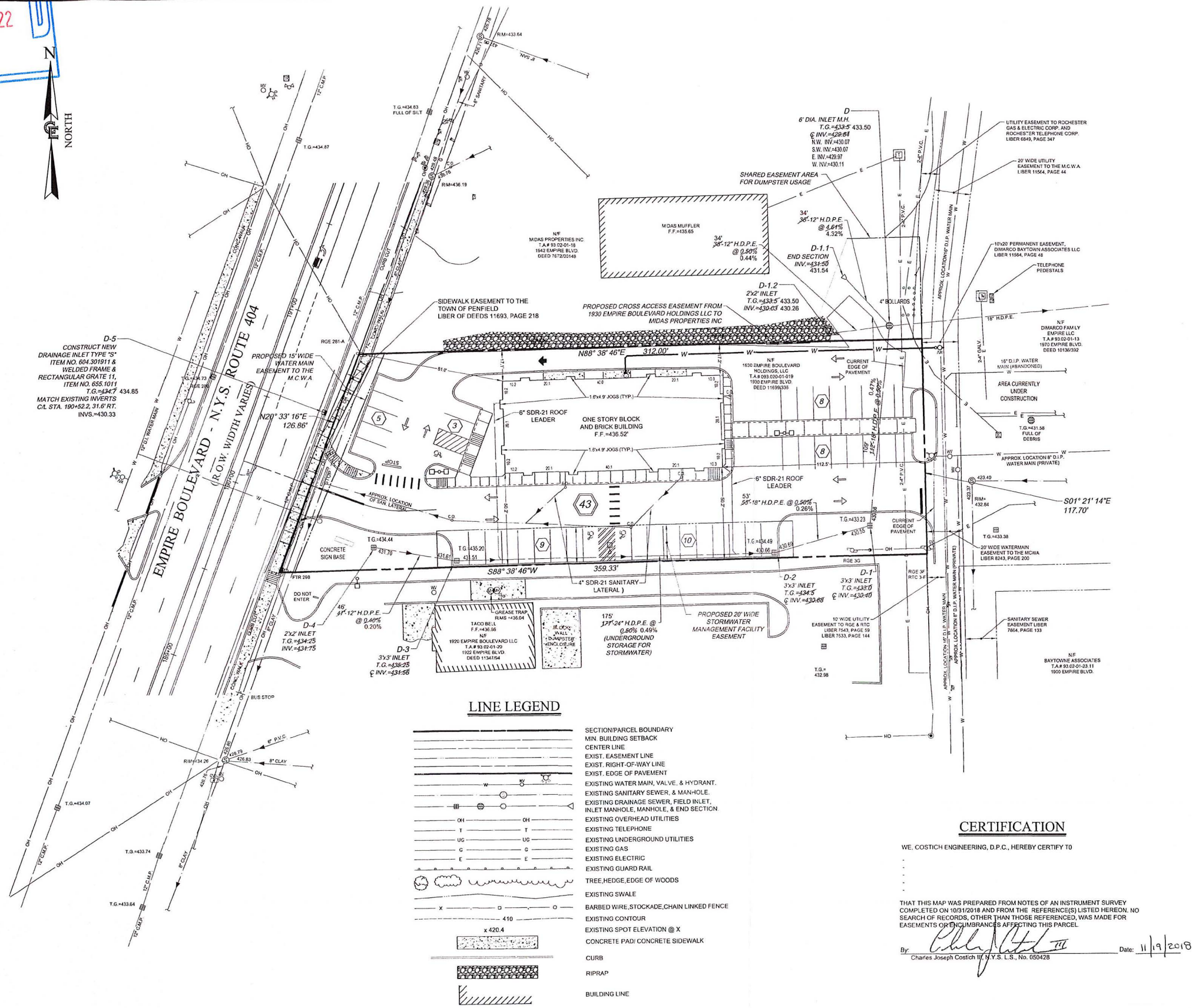
This is a retail intensive area. Our requested signs will blend in with others in the area, including the adjacent tenant – Verizon. Howard Hanna’s tenancy, investment and signage will only enhance the neighborhood without any drawbacks. We are only requesting building signs, and thus, there will be no monument, poles or any other potential hazards created.

We feel this building is suited for 3 signs, and we look forward to bringing the Howard Hanna brand to Pennfield, and request that adequate signage be granted to assist in our brand identity.

Howard Hanna

SCANNED

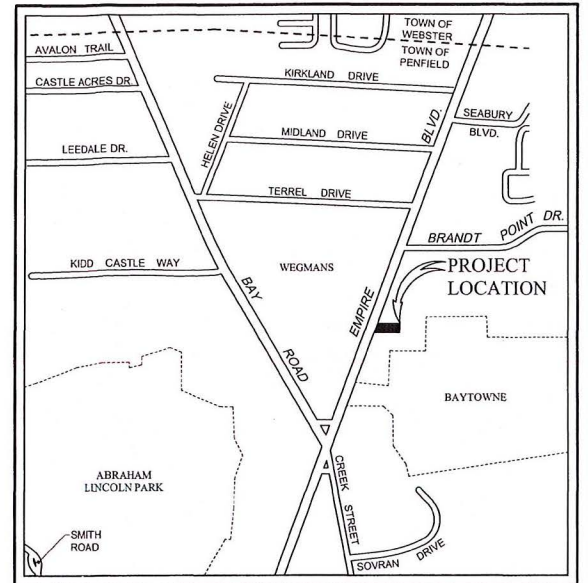
RECEIVED
 APR 18 2022
 By _____



D-5
 CONSTRUCT NEW
 DRAINAGE INLET TYPE 10"
 ITEM NO. 604.301911 &
 RECTANGULAR GRATE 11"
 ITEM NO. 605.1011
 T.G.=347 434.85
 MATCH EXISTING INVERTS
 CL. STA. 190+52.2, 31.6' RT.
 INVS.=430.33

LINE LEGEND

- | | |
|----------|--|
| [Symbol] | SECTION/PARCEL BOUNDARY |
| [Symbol] | MIN. BUILDING SETBACK |
| [Symbol] | CENTER LINE |
| [Symbol] | EXIST. EASEMENT LINE |
| [Symbol] | EXIST. RIGHT-OF-WAY LINE |
| [Symbol] | EXIST. EDGE OF PAVEMENT |
| [Symbol] | EXISTING WATER MAIN, VALVE, & HYDRANT. |
| [Symbol] | EXISTING SANITARY SEWER, & MAN-HOLE. |
| [Symbol] | EXISTING DRAINAGE SEWER, FIELD INLET,
INLET MANHOLE, MANHOLE, & END SECTION |
| [Symbol] | EXISTING OVERHEAD UTILITIES |
| [Symbol] | EXISTING TELEPHONE |
| [Symbol] | EXISTING UNDERGROUND UTILITIES |
| [Symbol] | EXISTING GAS |
| [Symbol] | EXISTING ELECTRIC |
| [Symbol] | EXISTING GUARD RAIL |
| [Symbol] | TREE, HEDGE, EDGE OF WOODS |
| [Symbol] | EXISTING SWALE |
| [Symbol] | BARBED WIRE, STOCKADE, CHAIN LINKED FENCE |
| [Symbol] | EXISTING CONTOUR |
| [Symbol] | EXISTING SPOT ELEVATION @ X |
| [Symbol] | CONCRETE PAD/ CONCRETE SIDEWALK |
| [Symbol] | CURB |
| [Symbol] | RIPRAP |
| [Symbol] | BUILDING LINE |



LOCATION SKETCH
 NOT TO SCALE

SYMBOL LEGEND

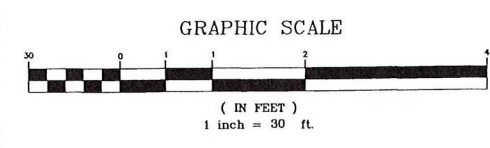
- | | | | |
|----------|------------------------|----------|-------------------------|
| [Symbol] | DRAINAGE MANHOLE | [Symbol] | ELECTRIC MANHOLE |
| [Symbol] | INLET DRAINAGE MANHOLE | [Symbol] | ELECTRIC METER |
| [Symbol] | CATCH BASIN | [Symbol] | TELEPHONE MANHOLE |
| [Symbol] | END SECTION | [Symbol] | TELEPHONE PEDESTAL |
| [Symbol] | END OF PIPE | [Symbol] | PHONE BOOTH |
| [Symbol] | MANHOLE | [Symbol] | PEDESTRIAN POLE |
| [Symbol] | SANITARY MANHOLE | [Symbol] | TRAFFIC CONTROL CABINET |
| [Symbol] | CLEAN OUT | [Symbol] | LAMP POST |
| [Symbol] | GAS VALVE | [Symbol] | LIGHT POLE |
| [Symbol] | GAS SERVICE | [Symbol] | UTILITY POLE WITH LIGHT |
| [Symbol] | GAS METER | [Symbol] | FLAG POLE |
| [Symbol] | SPRINKLER VALVE | [Symbol] | MAILBOX |
| [Symbol] | SPRINKLER HEAD | [Symbol] | BOLLARD |
| [Symbol] | WATER VALVE | [Symbol] | POST |
| [Symbol] | WATER SERVICE | [Symbol] | SIGN |
| [Symbol] | HYDRANT | [Symbol] | SIGN |
| [Symbol] | WATER METER | [Symbol] | SIGN |
| [Symbol] | WELL | [Symbol] | TURNING ARROW |
| [Symbol] | MONITOR WELL | [Symbol] | HANDICAP |
| [Symbol] | BORE | [Symbol] | STOP BAR |
| [Symbol] | CABLE TV PEDESTAL | [Symbol] | TREE DECIDUOUS |
| [Symbol] | SIGNAL POLE | [Symbol] | TREE CONIFEROUS |
| [Symbol] | UTILITY POLE | [Symbol] | BUSH |
| [Symbol] | GUY WIRE | [Symbol] | AIR CONDITIONING UNIT |
| [Symbol] | PULL BOX | [Symbol] | SANITARY UTILITY LATH |
| [Symbol] | ELECTRIC PULL BOX | [Symbol] | ELECTRIC UTILITY LATH |
| [Symbol] | TELEPHONE PULL BOX | [Symbol] | TELEPHONE UTILITY LATH |
| [Symbol] | TRAFFIC PULL BOX | [Symbol] | ELECTRIC UTILITY LATH |
| [Symbol] | TRANSFORMER | [Symbol] | CABLE UTILITY LATH |

CERTIFICATION

WE, COSTICH ENGINEERING, D.P.C., HEREBY CERTIFY TO

 THAT THIS MAP WAS PREPARED FROM NOTES OF AN INSTRUMENT SURVEY
 COMPLETED ON 10/31/2018 AND FROM THE REFERENCE(S) LISTED HEREON. NO
 SEARCH OF RECORDS, OTHER THAN THOSE REFERENCED, WAS MADE FOR
 EASEMENTS OR ENCUMBRANCES AFFECTING THIS PARCEL.
 By: *Charles Joseph Costich* Date: 11/19/2018
 Charles Joseph Costich III, N.Y.S. L.S., No. 050428

EXISTING UTILITIES (LOCATION, SIZES AND INVERTS) SHOWN ON THE PLANS ARE APPROXIMATE AND ARE NOT CERTIFIED AS TO THE ACCURACY OF THEIR LOCATION OR COMPLETENESS. THE CONTRACTOR SHALL BE RESPONSIBLE FOR DETERMINING THE EXACT LOCATIONS AND DEPTHS OF ALL UTILITIES AND STRUCTURES IN THE PATH OF, OR CLOSELY PARALLEL TO, OR UNDER, THE PROPOSED CONSTRUCTION. THE CONTRACTOR SHALL BE RESPONSIBLE FOR ANY DELAYS OR DAMAGES OCCURRING AS A RESULT OF INCORRECTLY LOCATED UTILITIES. IT IS THE CONTRACTOR'S RESPONSIBILITY TO NOTIFY THE VARIOUS UTILITY OWNERS IN AMPLE TIME FOR THEM TO LOCATE AND MARK THEIR FACILITIES. THE CONTRACTOR SHALL ALSO NOTIFY UNDERGROUND UTILITY LOCATION SERVICE AT LEAST 48 HOURS IN ADVANCE OF COMMENCING ANY WORK.



NO.	DATE	REVISION	BY	CHKD.	APVLS.

COPYRIGHT © 2018
 COSTICH ENGINEERING, D.P.C.

IT IS A VIOLATION OF LAW FOR ANY PERSON, UNLESS ACTING UNDER THE DIRECTION OF A LICENSED PROFESSIONAL ENGINEER, LAND SURVEYOR, ARCHITECT OR LANDSCAPE ARCHITECT, TO ALTER ANY ITEM ON THIS DOCUMENT. IN ANY WAY ANY LICENSEE WHO ALTERS THIS DOCUMENT IS REQUIRED BY LAW TO AFFIX HIS/HER SEAL AND THE NOTATION "ALTERED BY" FOLLOWED BY HIS/HER SIGNATURE AND SPECIFIC DESCRIPTION OF THE ALTERATION, TO THE DOCUMENT.



PROJECT ENGINEER
 M.P.M.
 DRAWN BY
 D.J.L.
 BOUNDARY
 R.B.G.
 TOPOBASE
 G.L.R./R.B.G.
 DATE
 10/31/2018
 SCALE
 1"=30'

217 LAKE AVENUE
 ROCHESTER, NY 14608
 (585) 458-9020

222-0032

TITLE OF PROJECT
verizon
 1930 EMPIRE BOULEVARD

TITLE OF DRAWING
AS-BUILT PLAN

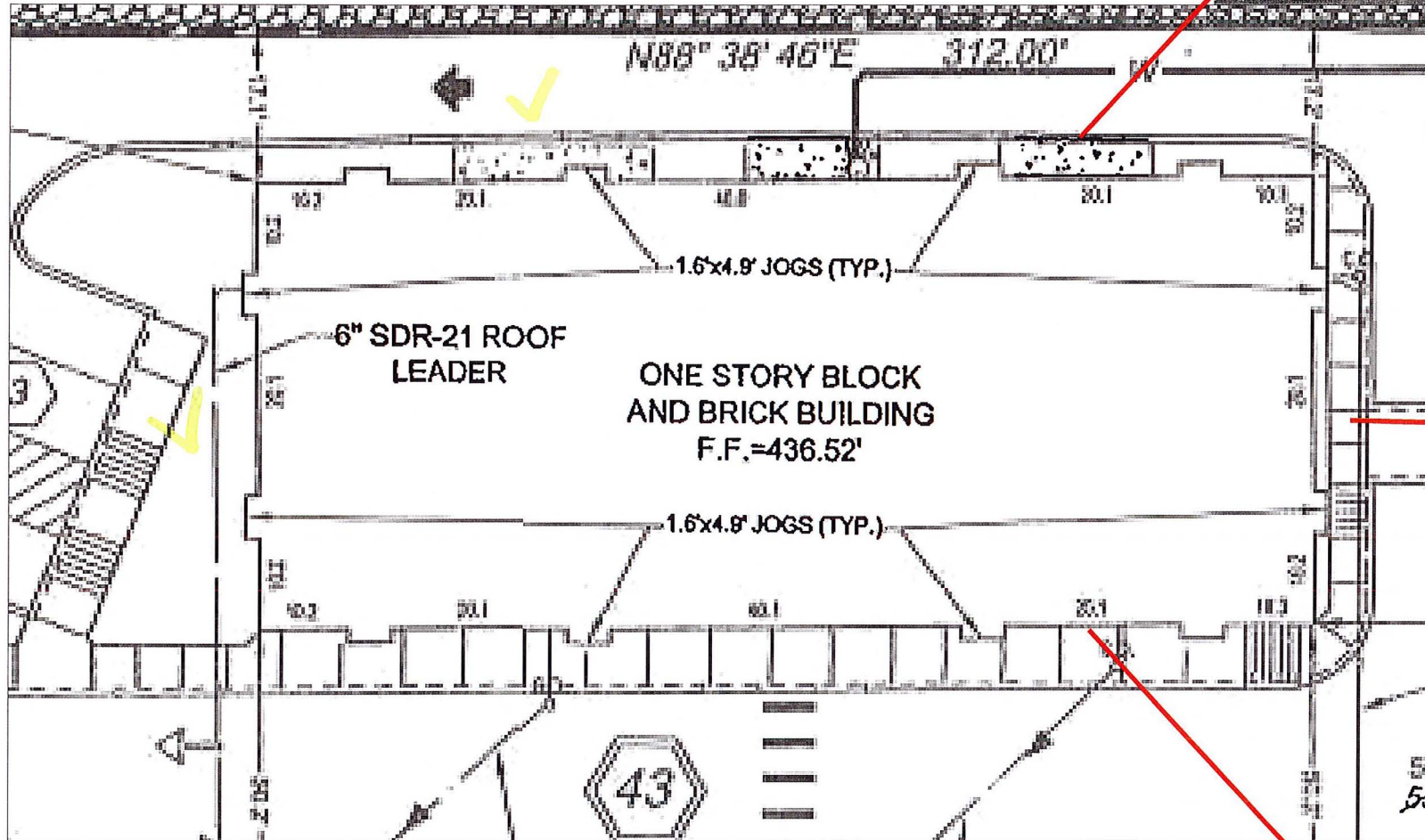
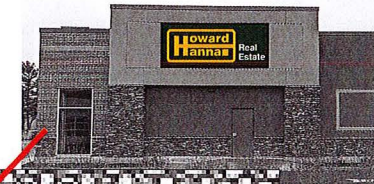
LOCATION OF PROJECT
 TAX PARCEL NO. 991508-01-019
 TOWN LOT, TOWNSHIP 13, RANGE 4, SECTION 01, TRACT, PURCHASE, TOWN OF PENFIELD, COUNTY OF MONROE, STATE OF NEW YORK

CLIENT
 THE DIMARCO GROUP
 1930 BRIGHTON-HENRIETTA TOWN LINE ROAD
 ROCHESTER, NEW YORK 14623

DWG # 6228
VB100

SCANNED

NORTH FACING ELEVATION
48' FRONTAGE



EAST FACING ELEVATION
50' FRONTAGE



SOUTH FACING ELEVATION
60' FRONTAGE



Type of sign/s	Cabinet Sign
Date	04-14-22
Customer Name	Howard Hanna
Address	1930 Empire Blvd
Sign Location	

This original, conceptual, and or shop drawing has been created by SKYLIGHT SIGNS INC.

It is submitted for use within the above stated organization ONLY and/or other parties necessary to make signage decisions.

This drawing is not to be shown, e-mailed or transmitted in any way to anyone outside of your organization, nor is it to be used, reproduced or exhibited in any way, without expressed written consent.

This custom artwork is for representational purposes only. Colors will not exactly match the paint or materials to be used.

ALL ELECTRICAL SIGNS REQUIRE 120V ELECTRIC. UNLESS OTHERWISE STATED

skylight signs inc.

60 Industrial Park Circle
Rochester NY 14624
Phone 585 594-2500
Fax 585 594-2525

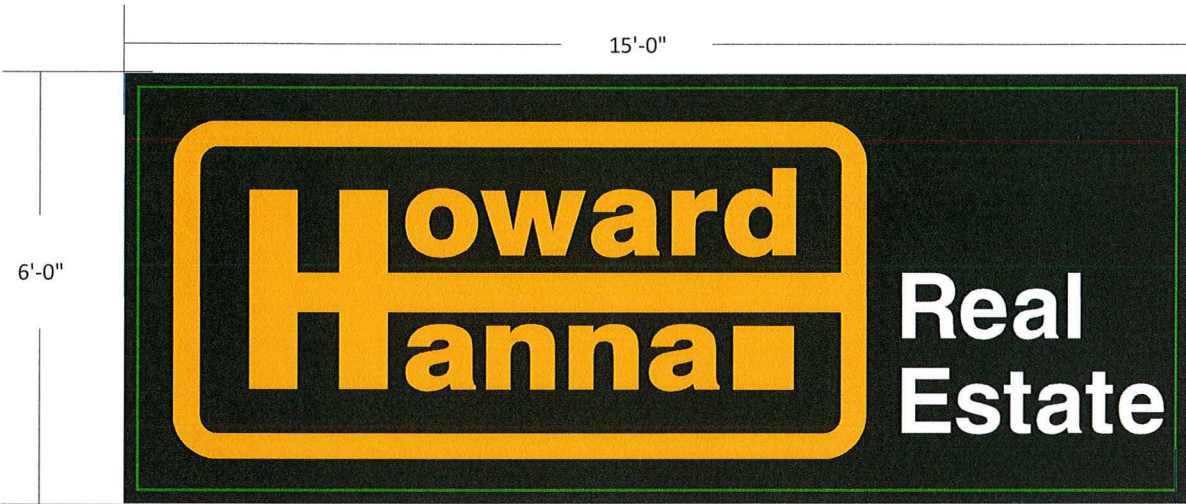
I have reviewed this drawing and accept it as shown. Any changes made to this drawing at any time will affect the contract price. Any and all changes to this drawing must be accompanied by written explanation and approved by both parties prior to production.

Customer Signature: *222-0032*

Date: **RECEIVED**

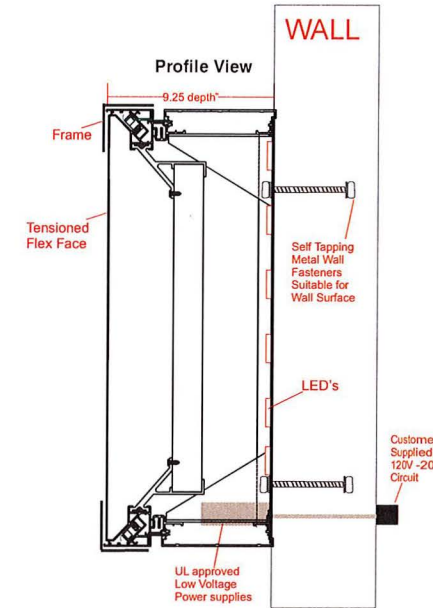
Landlord Signature: **APR 18 2022**

Date: **SCANNED**



Sign Type 2

FLEX FACE CABINET



Qty : 3 Signs Each Sign is 90 Sq.Ft.
 TOTAL SQ FT Three (3) SIGNS IS 270 Sq Ft.

2 1/2" Retainers

Description:

(1) Single Sided, Duel frame body sign cabinet with hinged Flex Face

Returns and Retainers to be painted Pantone 553 C.

Graphics to be :Heat Transferred translucent Vinyl to match 553C Green & 1235C Yellow

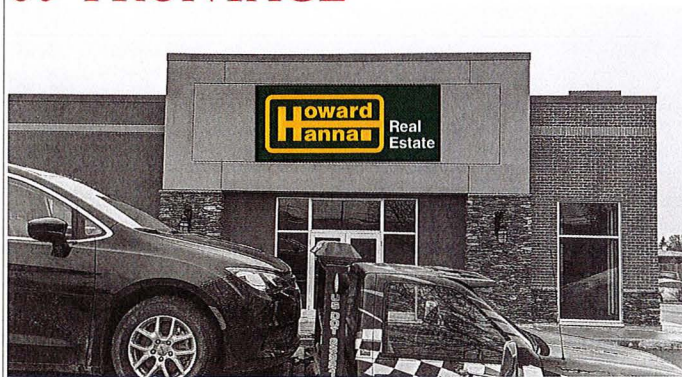
Colors:



SOUTH FACING ELEVATION
60' FRONTAGE

EAST FACING ELEVATION
50' FRONTAGE

NORTH FACING ELEVATION
48' FRONTAGE



Type of sign/s	Cabinet Sign
Date	04-18-22
Customer Name	Howard Hanna
Address	1930 Empire Blvd

Mike Bonanno
Michael B @ Skylight Signs.com

This original, conceptual, and or shop drawing has been created by SKYLIGHT SIGNS INC.
 It is submitted for use within the above stated organization ONLY and/or other parties necessary to make signage decisions.
 This drawing is not to be shown, e-mailed or transmitted in anyway to anyone outside of your organization, nor is it to be used, reproduced or exhibited in any way, without expressed written consent.

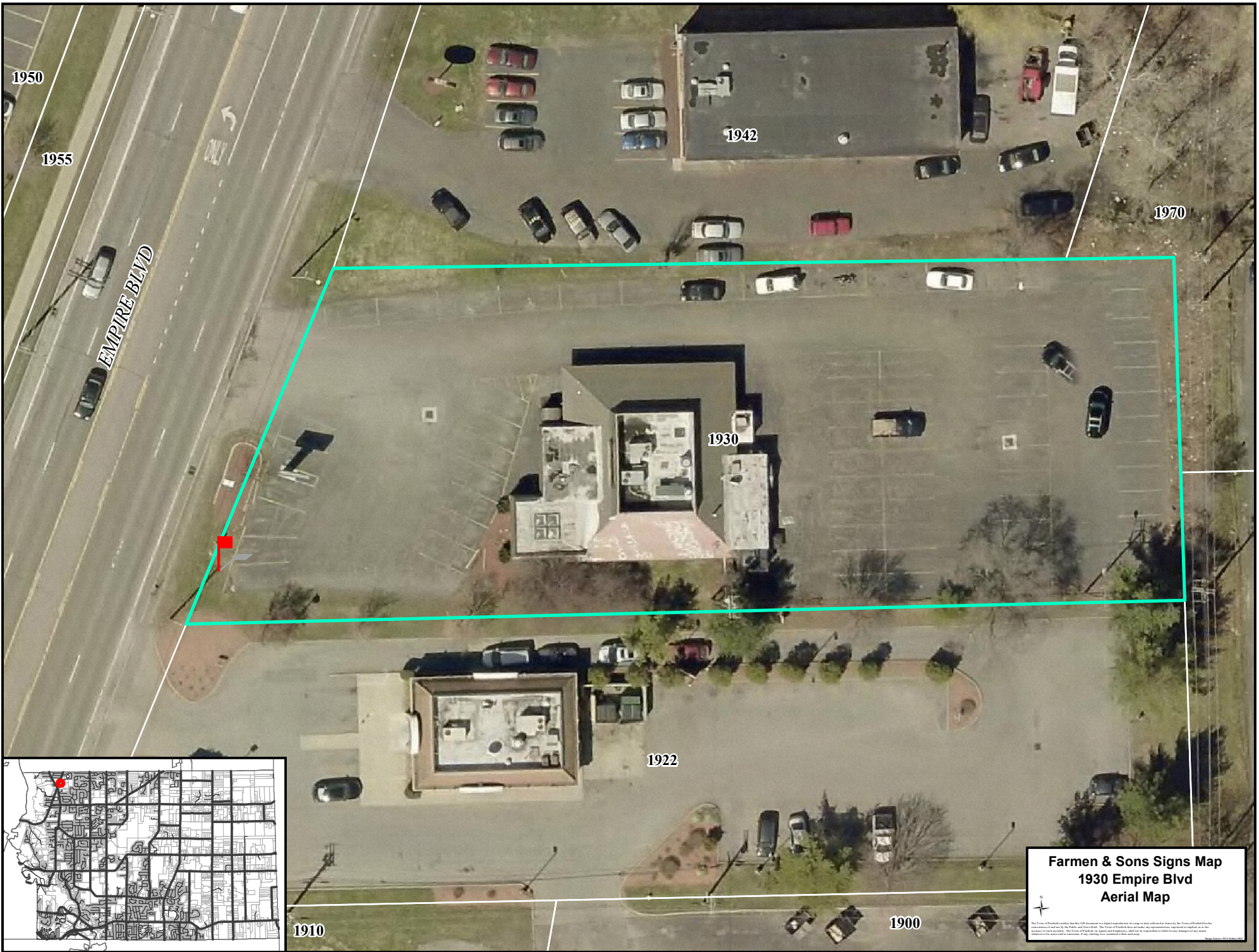
This custom artwork is for representational purposes only. Colors will not exactly match the paint or materials to be used.
ALL ELECTRICAL SIGNS REQUIRE 120V ELECTRIC. UNLESS OTHERWISE STATED

skylight signs inc.
 60 Industrial Park Circle
 Rochester NY 14624
 Phone 585 594-2500
 Fax 585 594-2525

I have reviewed this drawing and accept it as shown. Any changes made to this drawing at any time will affect the contract price. Any and all changes to this drawing must be accompanied by written explanation and approved by both parties prior to production.

Customer Signature: *227-0032*

Date: **RECEIVED**
 Landlord Signature: **APR 18 2022**
 Date: **SCANNED**
 By: _____



1950

1955

EMPIRE BLVD

1942

1970

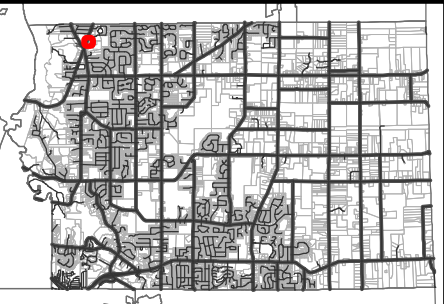
1930

1922

1900

1910

**Farmen & Sons Signs Map
1300 Empire Blvd
Aerial Map**



This map is published by Farmen & Sons, LLC. It is intended as a general reference tool and is not intended to be used as a legal document. The Farmen & Sons Signs Map is published by Farmen & Sons, LLC. It is intended as a general reference tool and is not intended to be used as a legal document. The Farmen & Sons Signs Map is published by Farmen & Sons, LLC. It is intended as a general reference tool and is not intended to be used as a legal document.